



200 Ritson Road North

# Proposed Telecommunication Tower



Shared Tower

Welcome to

# Shared Tower

---



- **Carrier-neutral telecommunications real estate and infrastructure**
- **Backed by the major carriers to deliver telecommunications infrastructure**
- **Developed 1,500 sites across the country**
- **Leaders in the field**

# Wireless Technology



**Calls**



**Text**



**Streaming**

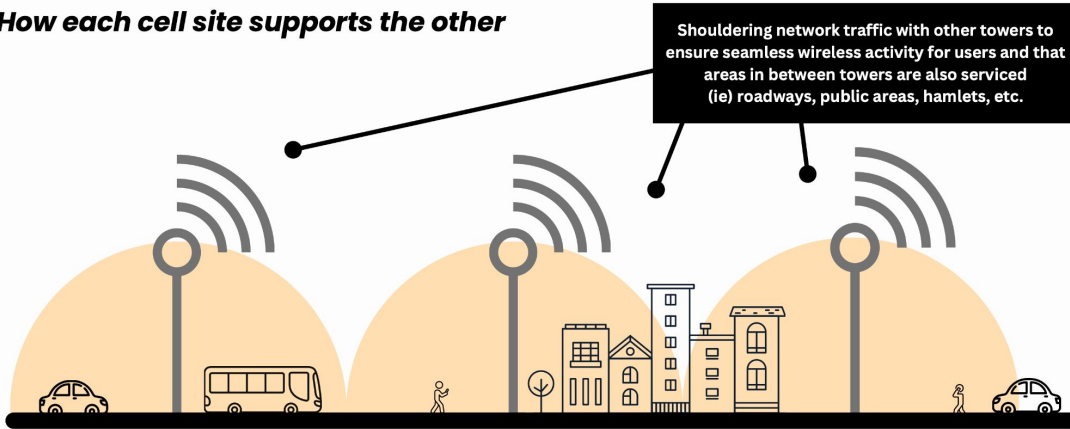
# Wireless Technology



# Network Growth

## The Wireless Network

*How each cell site supports the other*



**Everyone is afforded the same level of coverage despite the activity or geographical location.**

This illustration demonstrates how towers work to create a continuous wireless service that is constant and reliable.

There are no gaps in service and everyone is afforded the same level of service despite differences in geographical location.

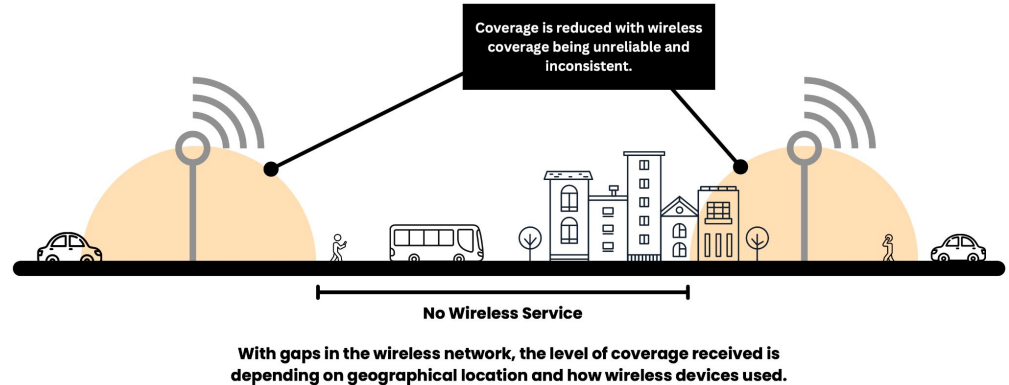


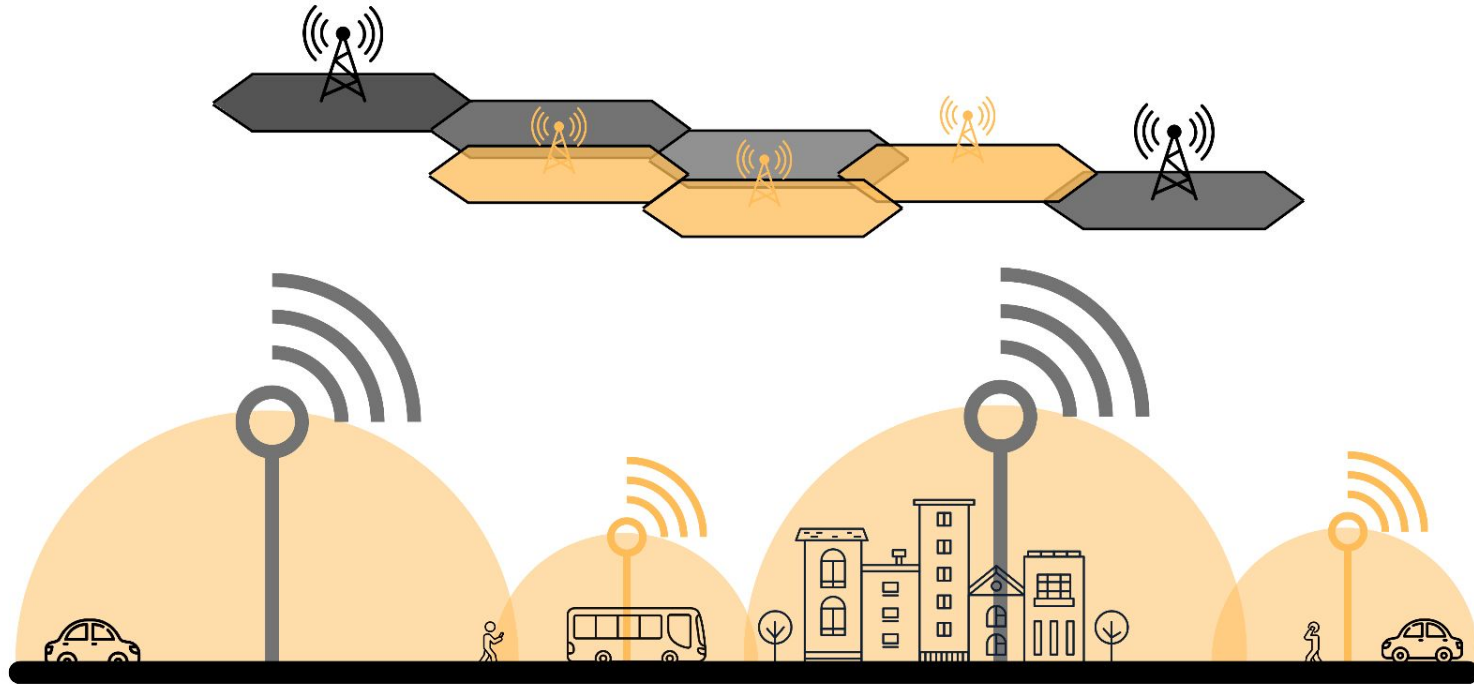
# Network Growth – Expansion

As population increases and municipalities continue to expand, there are gaps in service that develop, limiting their access to basic network usage.

Shared Tower takes this opportunity to establish towers that would:

- Alleviate gaps in service in order to provide a continuous level of reliable service
- Support collocation
- Increase network capacity and supports network traffic as more residential, commercial and institutional developments are constructed





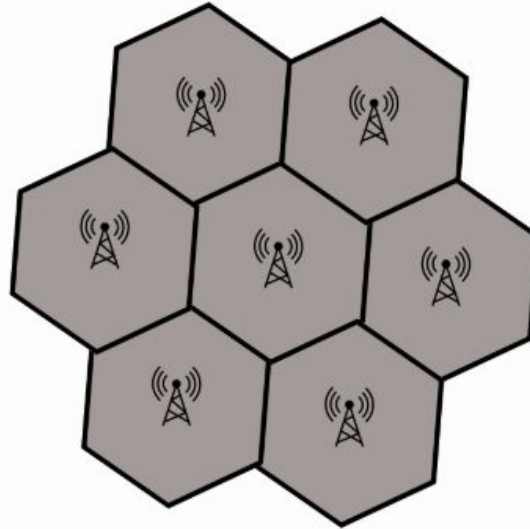
Additional Capacity sites provide a solution for both distance & capacity. These sites are closer to the user and can also offload and relieve the existing sites of network traffic and increase signal power in particular areas.

It ensures a smooth experience for users as they use their wireless devices and move from different locations, utilizing the services from various base stations.

# Wireless Network Development in Canada

**In order to keep up with the increasing wireless demands, carriers must establish a *Wireless Network*.**

The wireless network is comprised of multiple installations working together to provide **constant, consistent** and **reliable** wireless coverage.



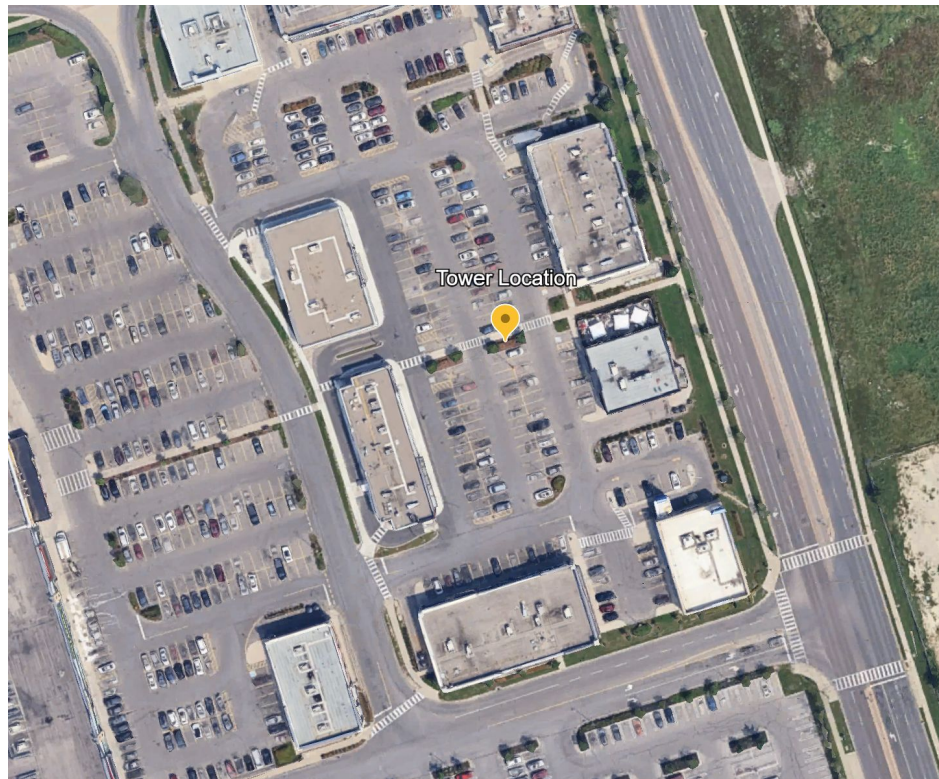


# Subject Site

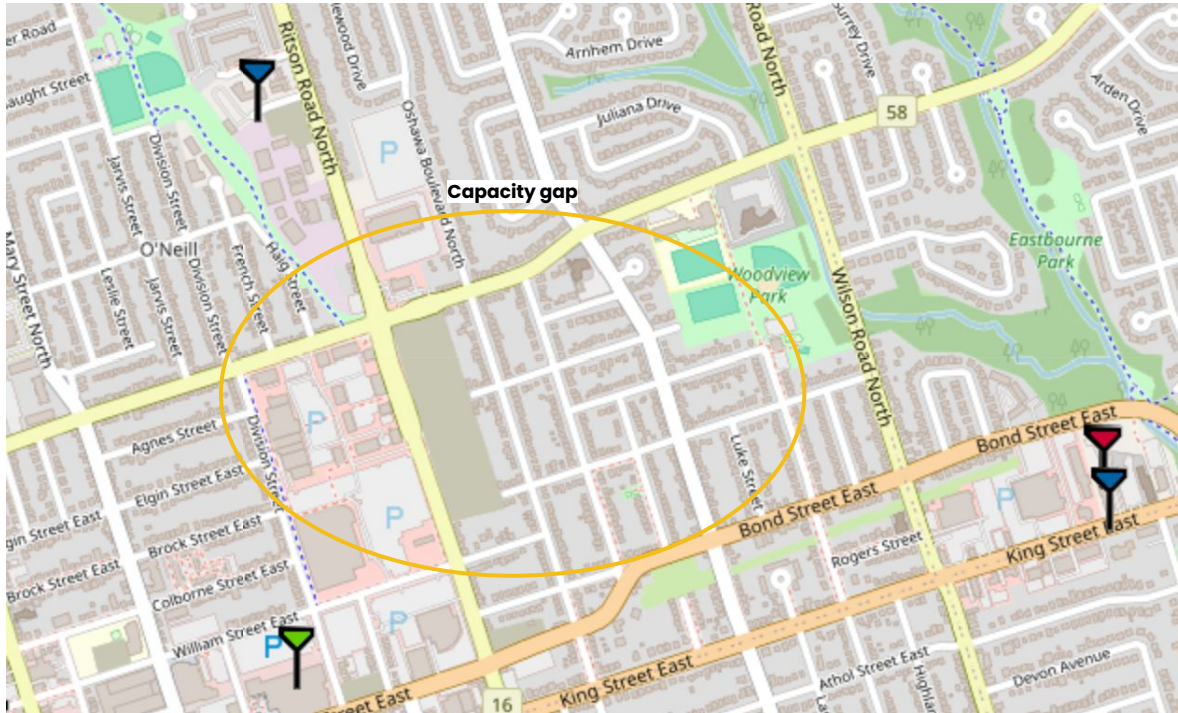
Shared Tower is proposing a **15 m slim monopole “Streetworks”** design within the parking lot

This tower location was chosen after reviewing factors such as

- network requirements
- on-site operations and will
- allowing space for multi-carrier collocation



# Existing Infrastructure & Network Requirements



There is a significant **capacity gap** in the area due to:

- dense population
- device usage
- business uses

The current infrastructure is unable to support the network due to distance and covering network usage in other areas.

We have confirmation of colocation by a National service provider for the proposed tower.



# Site Rendering #1



## Site Rendering #2



# Public Consultation

In accordance with the City of Oshawa's protocol:

- An information package sent by registered mail to mailing addresses within the prescribed notification radius
- 35 day commenting period was provided to recipients
- Public meeting hosted to address any comments/questions from members of the public

I can confirm that there were no comments or questions were received by the public to date on the proposal.

To conclude the consultation process, Shared Tower requests a Letter of Concurrence from the City of Oshawa confirming that the protocol was followed.





# Federally Regulated Infrastructure

- Innovation, Science and Economic Development Canada (ISED) is the governing body for installations for telecommunication towers
- It is federally regulated and exempt from Planning Act, Heritage Act, Building Code

Proponents must also fulfill other important obligations including the following:

- compliance with Health Canada's Safety Code 6
- Transport Canada aeronautical safety analysis
- NAV CANADA air navigation facility notification







Shared Tower

# Thank you!

Cheyenne Zierler,  
Senior Planning Manager  
E: [czierler@sharedtower.ca](mailto:czierler@sharedtower.ca)

Shared Tower Inc.  
1300 Cornwall Rd, Unit 101  
Oakville, ON L6J 7W5  
[www.sharedtower.ca](http://www.sharedtower.ca)

