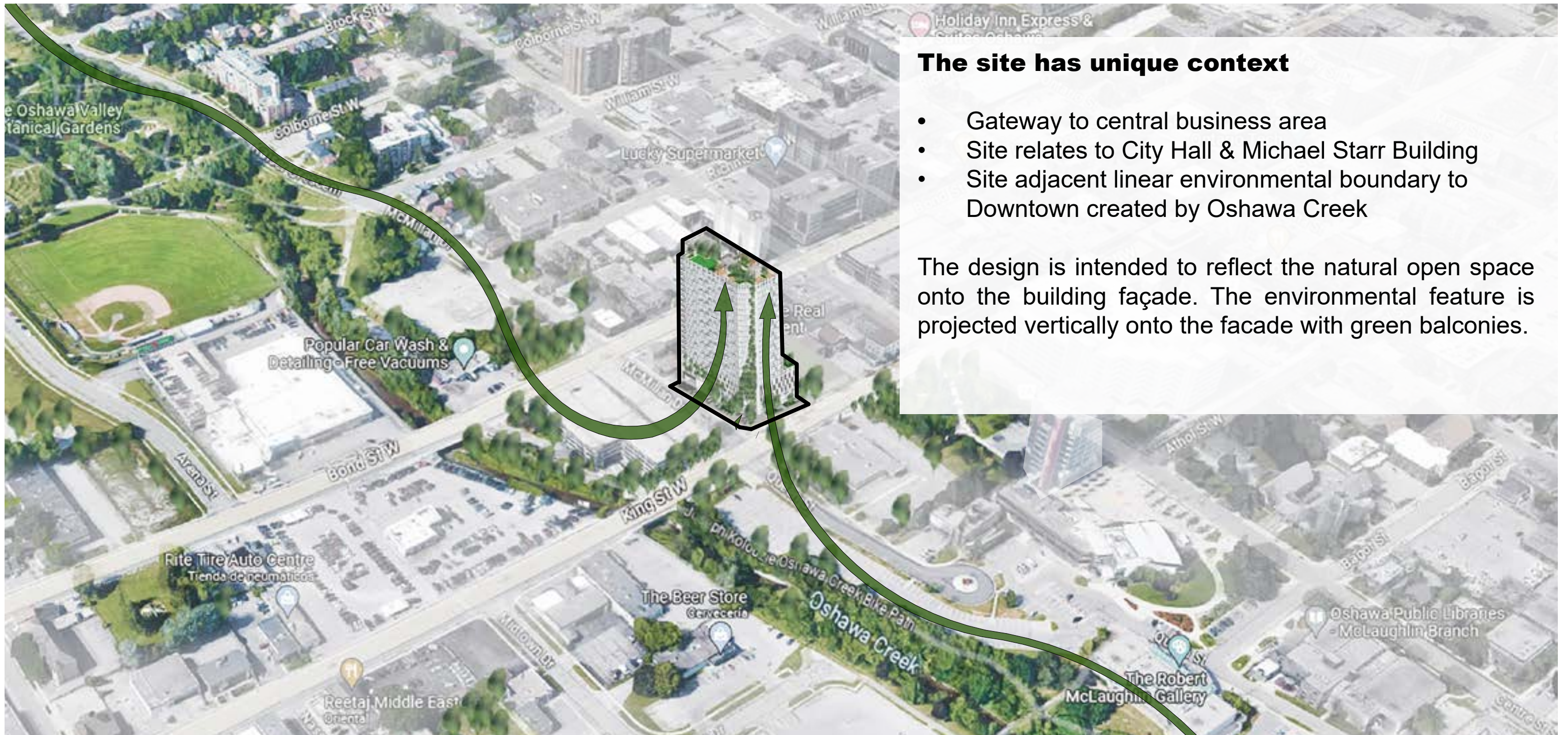




➔ **Public Meeting, City of Oshawa**

88 King Street, Oshawa
2702758 Ontario Ltd
September 9, 2024



The site has unique context

- Gateway to central business area
- Site relates to City Hall & Michael Starr Building
- Site adjacent linear environmental boundary to Downtown created by Oshawa Creek

The design is intended to reflect the natural open space onto the building façade. The environmental feature is projected vertically onto the facade with green balconies.

01 Project Concept

Context Diagram

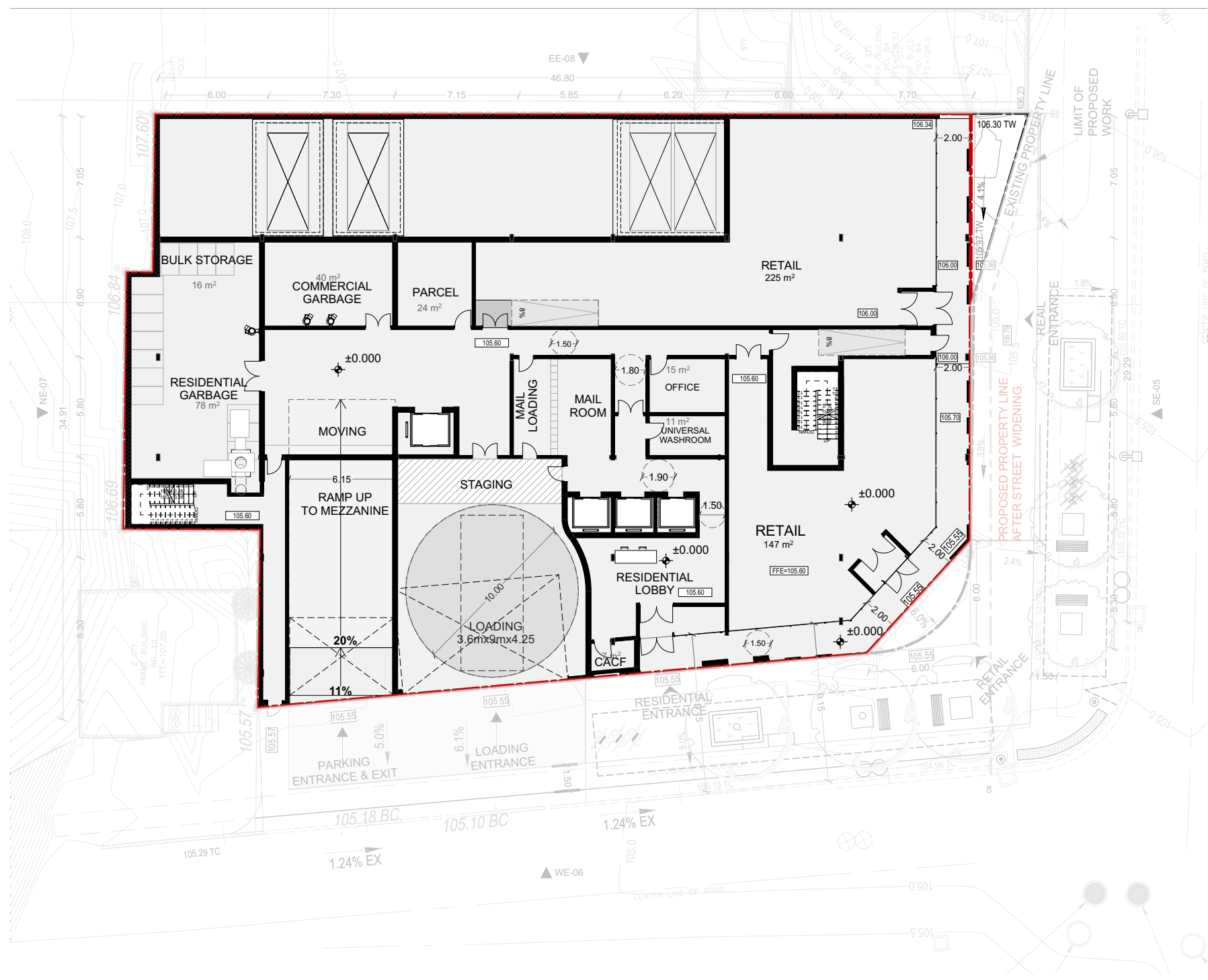


The design provides for 400m² of outdoor amenity space on level 5 as well as 571m² of indoor amenity space.

The rooftop is also designed with outdoor amenity space oriented to provide views toward Oshawa Creek.



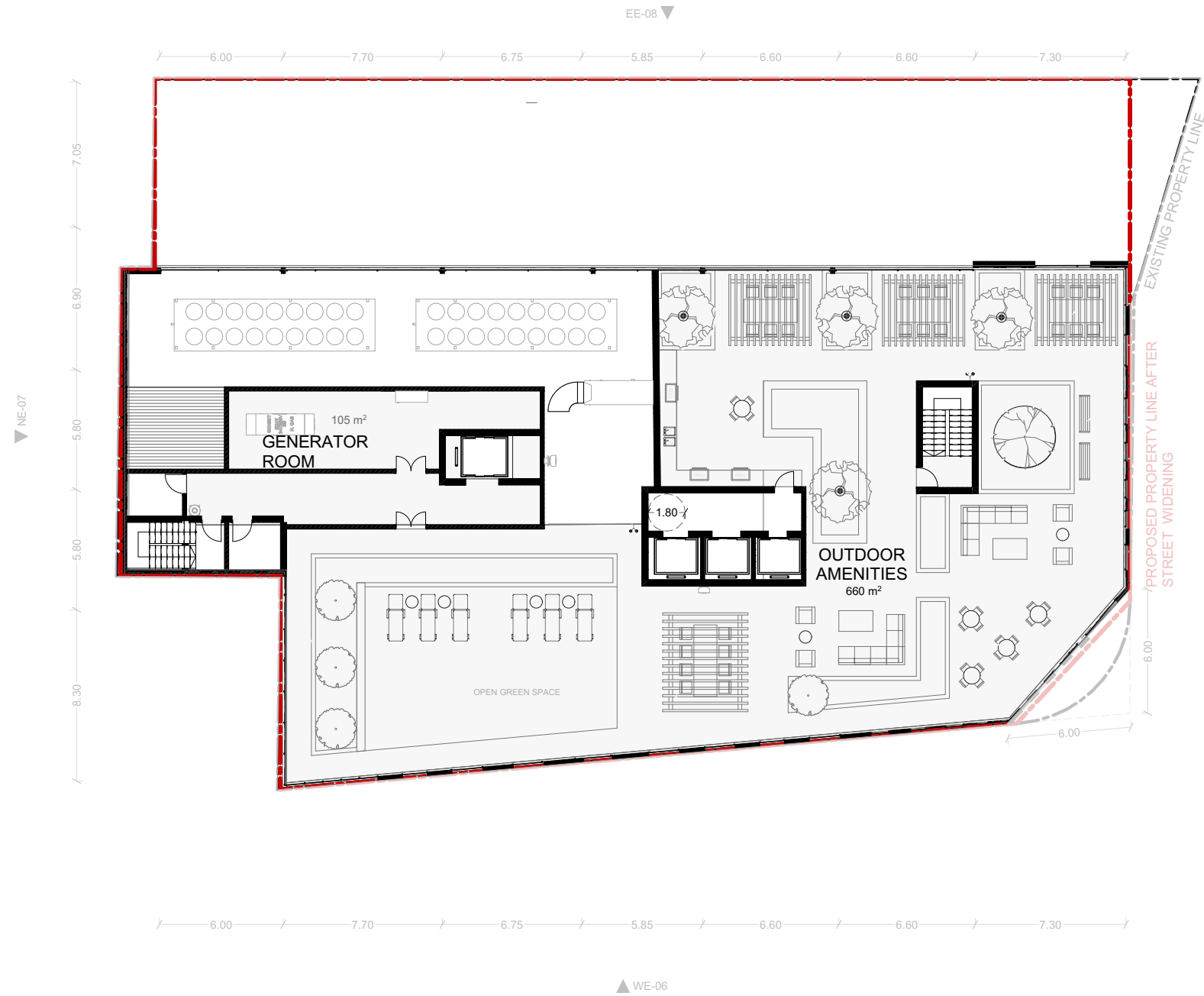
02 Proposed Development Rendering



03 Ground Floor



04 Residential Floor Plan



05 Rooftop



06 Schematic Section

Number of Units - 285

Ultimate Site Area - 1,500 Square Metres

Density - 1,865 Units per Hectare

Number of Storeys - 22

Total Parking Spaces -205

Parking Ratio - 0.72 Spaces Per Unit

Accessible Parking Spaces - 4 (3-TypeA + 1-TypeB)

Total Bicycle Parking Spaces - 222

Indoor Amenity Space - 571 Square Metres

Outdoor Amenity Space - 800 Square Metres

07 Proposed Site Statistics