

To: Community and Operations Services Committee

From: Ron Diskey, Commissioner,
Community and Operations Services Department

Report Number: CO-23-16

Date of Report: April 19, 2023

Date of Meeting: April 24, 2023

Subject: 40 km/h Signage along Ormond Drive between Coldstream Drive and Parkwood Meadow Park

Ward: Ward 1

File: 03-05

1.0 Purpose

The purpose of this report is to respond to the direction of CO-23-07 from the Community and Operations Services Committee on February 13, 2023 regarding the Notice of Motion Referral from City Council on January 30, 2023;

“Council direct that signage be installed to make the section of Ormond between Coldstream and Parkwood Meadow Park 40km as speeding leading up to the park from the south is a concern to many in the area.”

2.0 Recommendation

That the Community and Operations Services Committee recommend to City Council:

1. That the speed limit on Ormond Drive between Askew Court and Coldstream Drive (east intersection) be reduced to 40 km/h.

3.0 Executive Summary

Not applicable

4.0 Input From Other Sources

Not applicable

5.0 Analysis

5.1 Ormond Drive – Road Conditions

Ormond Drive is a collector class street with a pavement width of 8.5 metres. Currently the posted speed limit on Ormond Drive is 40 km/h from Coldstream Drive (west intersection) to Askew Court, and 50 km/h between Askew Court and Coldstream Drive (east intersection).

Conlin Meadows Park and Parkwood Meadows Park are both located along the section of Ormond Drive between Coldstream Drive (west intersection) and Askew Court.

There are sidewalks located on both sides of Ormond Drive, except for the section south of Woodmount Drive where sidewalks are on the west side only.

'No Parking Anytime' restrictions exist on the east, south, and west side of Ormond Drive from a point 39 metres north of Flagstone Court to a point 69 metres north of Greenhill Avenue. There are also 'No Parking Anytime' restrictions on the north side of Ormond Drive in the vicinity of Conlin Meadows Park.

A map of the area is appended as Attachment 1.

5.2 Request for 40 km/h Speed Limit Extension between Askew Court and Coldstream Drive (east intersection)

At the February 13, 2023 Community and Operations Services Committee meeting it was requested that the speed limit be reduced from 50 km/h to 40 km/h on the section of Ormond Drive between Askew Court and Coldstream Drive (east intersection).

Currently the posted speed limit on Ormond Drive is 40 km/h between Coldstream Drive (west intersection) and Askew Court. Typically 40 km/h speed limits are only installed in the vicinity of schools and in front of parks, however, for consistency and to improve connectivity of the speed limit along Ormond Drive, staff support this request and recommend that the speed limit be reduced to 40 km/h on Ormond Drive between Askew Court and Coldstream Drive (east intersection).

6.0 Financial Implications

The estimated cost to install the recommended speed limit signage is \$250. This cost can be managed within the Department's 2023 Operating Budget.

7.0 Relationship to the Oshawa Strategic Plan

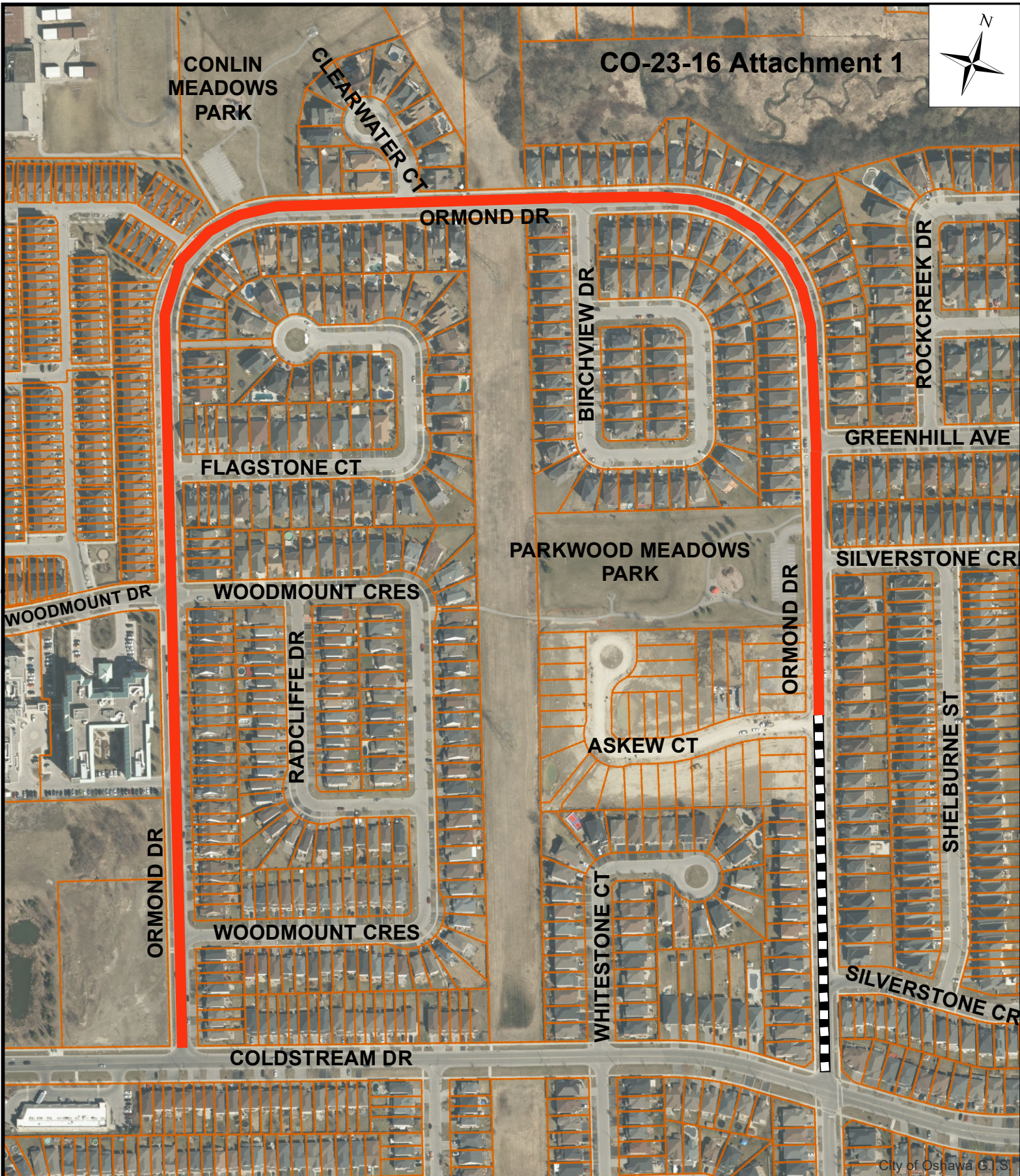
This report addresses the Oshawa Strategic Plan by responding to the goal of “Social Equity” with the theme of “An Active, Healthy and Safe Community” by continuing to support safe, shared use of roadways, trails, and other transportation systems and effectively focusing on accessibility, safety and speed reduction.



Beth Mullen, Director,
Community Support Services





Ron Diskey, Commissioner,
Community and Operations Services Department



City of Oshawa G.I.S.

LEGEND

-  - Existing 40 km/h Speed Limit
-  - Proposed new 40 km/h Speed Limit between Askew Ct & Coldstream Dr (east intersection).

CITY OF OSHAWA
COMMUNITY & OPERATIONS SERVICES DEPARTMENT

OVERVIEW MAP - ORMOND DRIVE

DATE: 04 19 2023

SCALE: NTS